

Why Choose Old Colony Hospice?

- **CHAP Accreditation:** Old Colony Hospice has the Community Health Accreditation Partner seal of approval with commendations for our pain and symptom management and volunteer programs.
- **Non-Profit Status:** All funds raised go directly to patient care and programs.
- We are one of the very few **Independent, Free-Standing Hospices** remaining: We are not part of any hospital, VNA or healthcare group.
- **Insurance Contracts:** Over the years, Old Colony Hospice has accumulated nearly all insurance contracts.
- **Best Nurse-to-Patient Ratios:** We strive to give patients and families more time with their hospice team. We do this by keeping caseloads for our staff lower than all area hospices to assure patients get visits when they need them.
- **Specialty Programs:** We provide unique interventions for our patients diagnosed with Dementia as well as for our Veteran Patients.
- **Top Care-Compare Ratings:** Old Colony Hospice consistently ranks at the top of all survey categories. See for yourself, visit: www.medicare.gov/care-compare

3 Wonderful Services 1 Easy Phone Number



**Palliative Care
Consultation Service**
A DIVISION OF OLD COLONY HOSPICE

(781) 341-4145

Proudly Serving All of Southeast Massachusetts

Abington, Attleboro, Avon, Bellingham, Braintree, Bridgewater, Brockton, Canton, Carver, Cohasset, Dedham, Dorchester, Dover, Duxbury, E. Bridgewater, Easton, Foxboro, Franklin, Halifax, Hanover, Hanson, Hingham, Holbrook, Hull, Hyde Park, Kingston, Lakeville, Mansfield, Middleboro, Millis, Milton, N. Attleboro, Needham, Norfolk, Norton, Norwell, Norwood, Pembroke, Plainville, Plymouth, Plympton, Quincy, Randolph, Raynham, Rockland, Roslindale, Scituate, Sharon Stoughton, Taunton, W. Bridgewater, Walpole, W. Roxbury, Westwood, Weymouth, Whitman, Wrentham.



HOSPICE
HONORS elite



Making Each Day Count

Providing personalized and
compassionate care since 1979

Medicare Certified - CHAP Accredited

Independent - Free Standing

A Non-Profit 501c3 Organization

Multi-Year Hospice Honors Elite Recipient

Every patient and family has a right to choose their hospice provider. Call today to find out why those who know hospice, choose Old Colony Hospice.

321 Manley Street
W. Bridgewater, MA 02379

www.OldColonyHospice.org
(800) 370-1322 | (781) 341-4145

The Hospice Care Team and Services

From the moment you contact Old Colony Hospice, you will experience a uniquely personal approach to caring for those at end of life. We take a team approach in delivering care to our patients and their loved ones as we provide a dignified experience that focuses on comfort, dignity and quality of life.

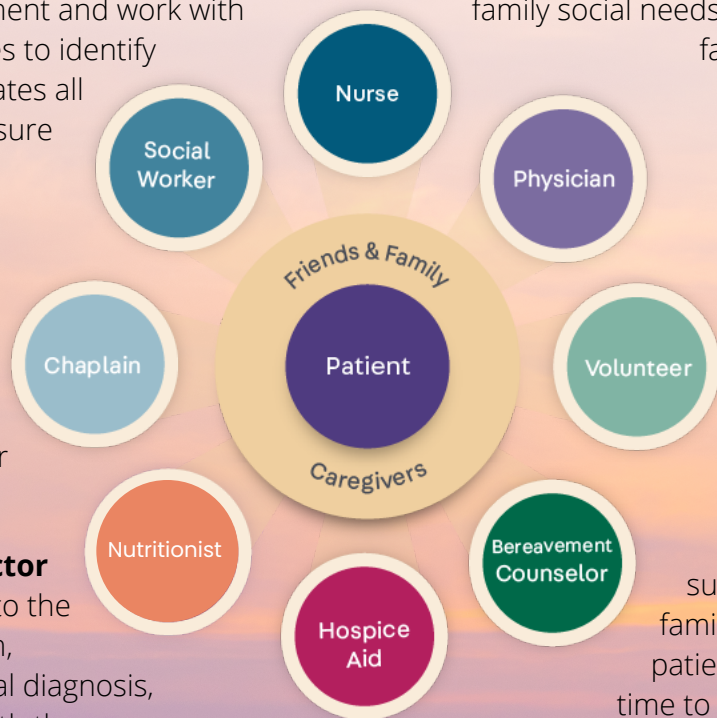
Our interdisciplinary team provides comprehensive care designed to meet the needs of our patients and their families. We provide expert pain and symptom management so our patients can live comfortably wherever they call home.

Nurses are specially trained in pain and symptom management and work with patients and families to identify needs and coordinates all care required to assure comfort, dignity and quality of life.

Hospice Aides provide direct personal care to patients and assist families in caring for their loved one.

The Medical Director provides guidance to the entire hospice team, certifies the terminal diagnosis, and collaborates with the patients' own physician(s).

Medications and Equipment that are part of the hospice care plan, will be provided and delivered directly to the patient's home.



Social Workers address patient and family social needs, planning, and refers families to appropriate community agencies and services.

Chaplains address patient and family spiritual needs, provide direct counseling, and assist with memorial preparations.

Volunteers provide companionship and support to patients and families. They also sit with patients to offer the family time to run errands or take a break from care-giving.

Palliative Care Consultation Service

Our Palliative Care Consultation Service

focuses on pain, symptoms and stresses of progressive illnesses. Consultations may be provided in conjunction with curative and/or restorative treatments and may be accessed at any point in the disease process. Just like hospice, palliative care consults can be provided wherever anyone calls home. Our Palliative Care Nurse Practitioners consult with patients, their families, as well as the patient's physicians to address all aspects of care and provide a patient-centered care plan with individualized focused support.



Palliative Care Areas of Focus:

- Pain and symptom management
- Education on specific disease processes
- Advanced Directives conversations
 - M/POLST discussions/paperwork
- Medication management